



**MALLARD**  
**MANUFACTURING**  
YOUR GRAVITY FLOW SPECIALISTS



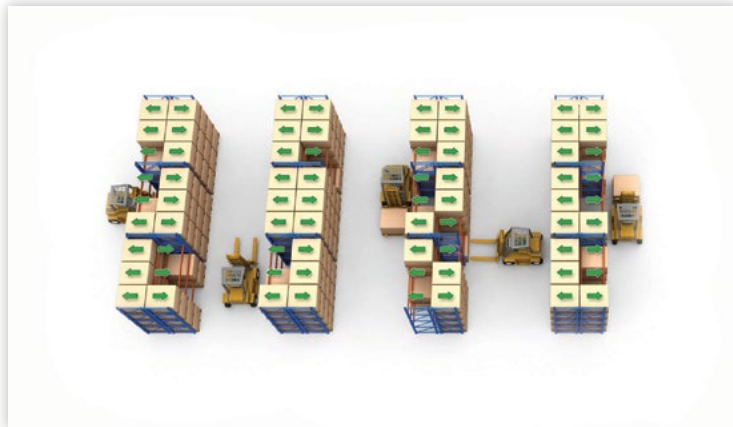
**Engineered &  
Manufactured  
for Long Lasting  
Performance**

**Pallet Flow Storage**



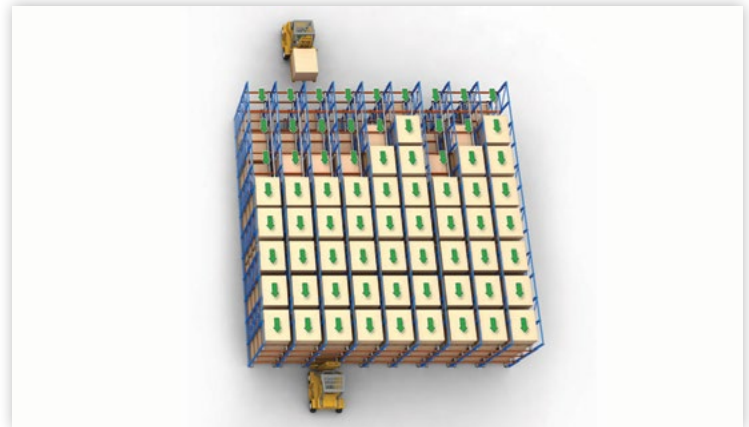
# THE POWER OF PALLET FLOW vs. Conventional Pallet Rack

## Conventional Pallet Rack



- ✗ Wasted Space
- ✗ Productivity Loss
- ✗ Increased Labor Cost
- ✗ Excessive Equipment
- ✗ High Overhead

## Pallet Flow Rack



- ✓ Gain up to 50% more space or capacity
- ✓ Increased Productivity
- ✓ Time & Labor Savings
- ✓ Reduced Equipment Costs
- ✓ Energy Savings

## How Does Pallet Flow Save Space, Time, Energy and Money ?

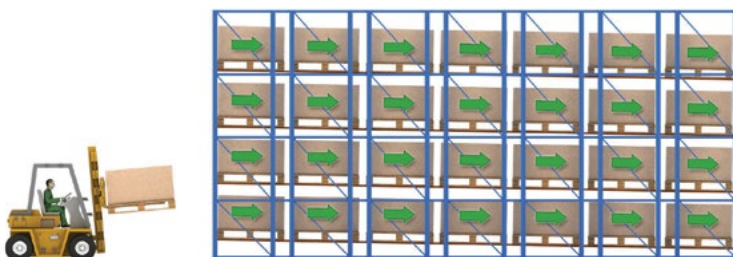
Selective storage rack typically wastes 50-60% of cubic storage space availability. This can be an expensive proposition, particularly in high value manufacturing operations, and also for distribution-oriented clients. When compared to other types of high density storage solutions (drive-in rack, for example), pallet flow is significantly more efficient - with no forklift movement within the structure. All activity takes place at the aisles.

### Mallard Pallet Flow

For over 50 years, Mallard has been designing and manufacturing pallet flow systems that are designed to stand the test of time. Throughout our company history, we have been able to address our customers' requirements for pallets of all shapes, sizes and configurations. Success of these systems requires careful analysis and testing, a Mallard hallmark.

Mallard has the widest array of pallet flow lane solutions available in the industry. We take pride in developing solutions that are custom tailored to our users' specific needs, instead of forcing them to adapt their processes to a "one size fits all" approach.

- Allows First In, First Out (FIFO) rotation
- Superior labor/equipment utilization
- Less inventory obsolescence
- Gravity-based/no power required



Pallet Flow





## MAGNUM WHEEL PALLET FLOW

### Industry's Strongest, Most Reliable Pallet Flow

The Magnum pallet flow wheel is the result of Mallard's ongoing commitment to providing the most durable, effective flow lanes in the marketplace. Comprised of rugged, reinforced resin material, the Magnum wheel has approximately double the wheel capacity compared to competitive polycarbonate-based wheels. The Magnum wheel also has a wider surface than polycarbonate wheels, leading to better pallet tracking. Magnum wheels have more robust bearings, leading to a longer lifespan.



- Most durable pallet flow wheel available
- Ideal for heavy loads over 3,000#
- Typical for freezer applications
- Lifetime damage warranty!



#### Magnum Wheel (2.9" Diameter)



- Nearly twice the capacity of typical polycarbonate wheels
- LIFETIME WARRANTY-No other supplier matches
- Wider tread width allows for superior pallet tracking

#### Industry Equivalent Wheel (2.9" Diameter)



- Economical alternative to Magnum wheel
- Reinforced ribbing helps minimize torsional twisting
- Comparable to typical industry offerings



# STEEL SKATE WHEEL PALLET FLOW



- 50#-300# wheel capacities
- 1.9"-2.25" wheel diameters
- Inline and staggered configurations
- Rugged ball bearing construction

## Durable Construction, Affordably Priced

Steel skate wheel pallet flow is ideal for users who prefer an economical solution for shallow depth lanes and for lighter weight loads. Steel skate wheel lanes are common for lanes ranging from 2 deep to 5 deep, and loads under 2,000#. Mallard has also designed lanes to be "floor-mounted", so that housekeeping issues can be better addressed with debris and dust removal. Steel skate wheel lanes are also ideal for usage in pick modules, for both high volume case selection, as well as empty pallet return (EPR) lanes.

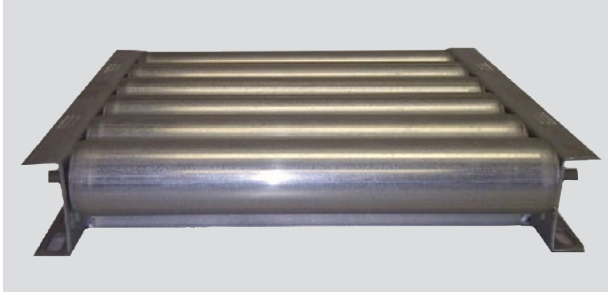


Steel Skate Wheel Pallet Flow



## Ideal for All Pallet Types

Full roller pallet flow is by far the most flexible type of flow for users who have a variety of pallet sizes and footprints. Today's world for many users is a challenging environment. Vendors are often changing pallet configurations to meet expectations of lowering inbound/outbound product costs. Increasing shipping costs are a factor as well. Mallard's full width roller lanes are ideal for this situation, so as pallet configurations change, the system design will remain reliable.



Mallard's full roller designs are engineered and built to the highest standards, using heavy duty bearings, axles, tube and side channel. Full roller systems are also designed with maintenance in mind, so that in the event damage occurs, replacement components can easily be installed.



## FULL & SPLIT ROLLER PALLET FLOW



- Rollers available: 1.4"/1.9"/2.5" diameter
- Axles: 5/16" round, 7/16" hex
- Capacities range from 90# to 350# per roller
- Between frame dimensions range from 4"-60" BF



Full & Split Roller

# SPEED CONTROLLERS



## Designed for a Variety of Capacities

Mallard speed controllers are designed to work with a variety of weights and environments. From the smallest container weighing 25# to pallets weighing 3,000#, Mallard speed controllers can ensure product safely travels down your lane.

The 'indirect' method shown above is designed for lanes using skate wheel or larger polycarbonate wheel tracks. This method allows for a typical load weight variance in the lane of approximately 1,500#.

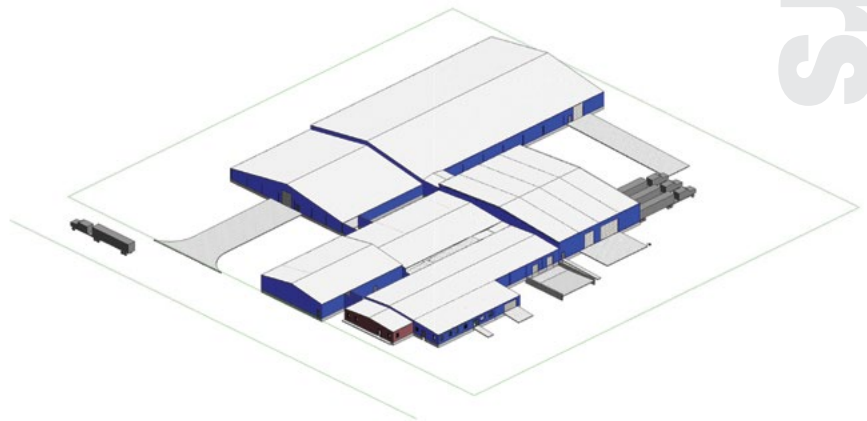
- Model E15, 25#-200# capacity
- Model E35, 175#-2000# capacity
- Model E40, 500#-3000# capacity
- Freezer packages to -40 degrees



Mallard speed controllers can also be mounted 'indirectly' under full width roller conveyor. Adjusting springs allow for tension to be reduced or increased in order to better control the rate of flow downlane. Speed controllers are tested to 80,000 cycles.

## Challenges Met – Problems Solved!

Mallard is the leading resource for quality engineered **Pallet Flow, Carton Flow and Gravity Conveyor** for manufacturing and distribution facilities worldwide. We support an extensive integrator and distributor network providing value-added engineering, product testing and sales support from our recently expanded 120,000 sq. ft. production facility in Sterling, Illinois.



101 Mallard Road, Sterling, IL 61081  
Phone: 800-243-6694 Fax: 815-625-9498  
Email: [info@mallardmfg.com](mailto:info@mallardmfg.com)  
[www.mallardmfg.com](http://www.mallardmfg.com)

Speed Controllers